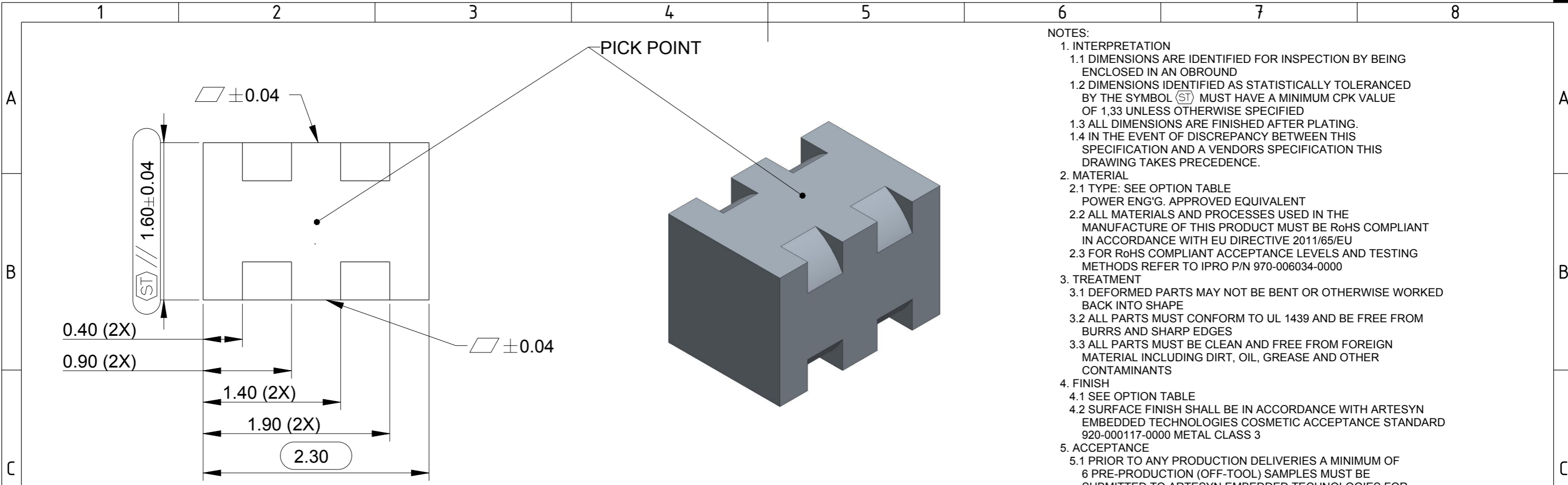


PROPRIETARY, CONFIDENTIAL and/or TRADE SECRET MATERIAL -- NOT OPEN TO PUBLIC. DO NOT SCAN, COPY OR DISTRIBUTE WITHOUT WRITTEN AUTHORIZATION FROM ARTESYN EMBEDDED TECHNOLOGIES, INC.
 ©2015 ARTESYN EMBEDDED TECHNOLOGIES, INC. ALL RIGHTS RESERVED
 This document, and the information it contains, are the property of ARTESYN EMBEDDED TECHNOLOGIES, INC. and are protected by law. Both must be held in strictest confidence at all times.
 No license or right to copy, use or disclose this document, or the information it contains, is granted either expressly or by implication.



- NOTES:
- INTERPRETATION
 - DIMENSIONS ARE IDENTIFIED FOR INSPECTION BY BEING ENCLOSED IN AN OBOUNDR
 - DIMENSIONS IDENTIFIED AS STATISTICALLY TOLERANCED BY THE SYMBOL (ST) MUST HAVE A MINIMUM CPK VALUE OF 1.33 UNLESS OTHERWISE SPECIFIED
 - ALL DIMENSIONS ARE FINISHED AFTER PLATING.
 - IN THE EVENT OF DISCREPANCY BETWEEN THIS SPECIFICATION AND A VENDORS SPECIFICATION THIS DRAWING TAKES PRECEDENCE.
 - MATERIAL
 - TYPE: SEE OPTION TABLE
POWER ENG'G. APPROVED EQUIVALENT
 - ALL MATERIALS AND PROCESSES USED IN THE MANUFACTURE OF THIS PRODUCT MUST BE RoHS COMPLIANT IN ACCORDANCE WITH EU DIRECTIVE 2011/65/EU
 - FOR RoHS COMPLIANT ACCEPTANCE LEVELS AND TESTING METHODS REFER TO IPRO P/N 970-006034-0000
 - TREATMENT
 - DEFORMED PARTS MAY NOT BE BENT OR OTHERWISE WORKED BACK INTO SHAPE
 - ALL PARTS MUST CONFORM TO UL 1439 AND BE FREE FROM BURRS AND SHARP EDGES
 - ALL PARTS MUST BE CLEAN AND FREE FROM FOREIGN MATERIAL INCLUDING DIRT, OIL, GREASE AND OTHER CONTAMINANTS
 - FINISH
 - SEE OPTION TABLE
 - SURFACE FINISH SHALL BE IN ACCORDANCE WITH ARTESYN EMBEDDED TECHNOLOGIES COSMETIC ACCEPTANCE STANDARD 920-000117-0000 METAL CLASS 3
 - ACCEPTANCE
 - PRIOR TO ANY PRODUCTION DELIVERIES A MINIMUM OF 6 PRE-PRODUCTION (OFF-TOOL) SAMPLES MUST BE SUBMITTED TO ARTESYN EMBEDDED TECHNOLOGIES FOR EVALUATION AND APPROVAL
 - ALL DELIVERIES MUST INCLUDE THE FOLLOWING
 - QUALITY INSPECTION REPORT
 - MATERIAL CERTIFICATE
 - AVOID PEEL OFF PLATING AND BURRS ALONG THE EDGES
 - THE PLATED PART IS NOT ALLOWED TO HAVE SURFACE DISCOLORATION (DARKENING) AFTER HIGH TEMP. SAMPLING TEST OF 5-8 MINUTES @ 260C MIN.
 - HIGH TEMP. SAMPLING TEST REPORT SHALL BE ENCLOSED IN EACH BATCH OF DELIVERY.
 - PACKAGING
 - MUST COMPLY WITH 920-000120-0000(SUPPLIER PACKAGING STANDARDS)
 - PARTS TO BE PACKAGED IN TAPE AND REEL. SEE DRAWING PICK UP POINT. TAPE & REEL PACKAGING PER EIA-481-D
 - OTHER REQUIREMENTS
 - ARTESYN EMBEDDED TECHNOLOGIES PART NO. AND VENDOR CODE SHOULD BE SHOWN CLEARLY ON THE PACKAGING

AF
AF

OPTION TABLE			
P/N SUFFIX (TABD)	DESCRIPTION	MATERIAL	PLATING
-0001	MECH,FAB MET,SLDRL,BRS, LGA60 POWER BLOCK	BRASS C26800	3um MIN. MATTE TIN OVER 2.5um MIN.NICKEL
-0201	MECH,FAB MET,SLDRL,CU,LGA80	COPPER JIS C1100 OR COPPER GB/T 5231 T2	3um MIN. MATTE TIN OVER 2.5um MIN.NICKEL

REMARKS:
 TOLERANCES:
 DECIMAL .XX ±0.08
 ANGLE ±1°

SECTION A-A (2X)

SEE OPTION TABLE	AF	8111165	-ADD NOTE 5.4 AND 5.5	2015-12-08	PHILIP CHUNG	 Drawn to ISO STANDARDS Tolerancing SEE REMARKS	Unless Stated Otherwise		General tolerances SEE REMARKS Units LENGTH: mm ANGLE: DEG Scale 25.000
SEE OPTION TABLE	AE	8042675	-DIM IS (ST) // 1.6±0.04 WAS // 1.6±0.04	2014-12-03	ALEX WONG		Material SEE NOTES	Treatment SEE NOTES	
SEE OPTION TABLE	AC	8041617	-UPDATE "EMERSON " TO "ARTESYN EMBEDDED TECHNOLOGIES" -DIM IS // 1.60±0.04 WAS 1.60±0.04 -ADD DIM ±0.04 -UPDATE DRAWING FORMAT	2014-10-23	ALEX WONG	Created by PHILIP CHUNG	Approved by ANDY CC LAU		Document type DRAWING
SEE OPTION TABLE	AB	8034013	-UPDTATE NOTE6.2 FOR ADDING DETAIL OF TAPE & REEL STANDARD -ADD OPTION TABLE AND ADD P/N SUFFIX -0201	2014-02-26	REX FUNG	 The Artesyn Embedded Technologies logo is a trademark of Artesyn Technologies, Inc.	Dept. CNH	Technical reference PHILIP CHUNG	Document status -----
P/N SUFFIX	REVISION	ECO NO.	REVISION DESCRIPTION	DATE	REVISED BY	APPROVED BY	Title, Supplementary title SEE OPTION TABLE		500-007120-TABD Rev. AF Date of issue 2015-12-08 Lang. EN Sheet 1 of 1

SHEET REVISION HISTORY